
GroES *E.coli***Recombinant, expressed in *E.coli*****Cat. No. GRS3002****Size : 100 µg**

Description GroES protein is the co-chaperonin of GroES in *E.coli* and assists protein folding. GroEL mediated folding requires the co-chaperonin GroES which is essential for viability. GroES is composed of a single heptameric ring of 10kDa subunits that binds to the ends of the GroEL cylinder. GroES gene was amplified by PCR from *E.coli* and cloned into an expression vector. This protein was overexpressed in *E.coli* and was purified by using conventional chromatography techniques.

Form : Liquid. In 25 mM Tris-HCl (pH7.5) 100mM NaCl, 5mM DTT, 10%Glycerol

Molecular weight : 10.4KDa (97amino acids)

Sequence

MNIRPLHDRV IVKRKEVETK SAGGIVLTGS AAAKSTRGEV LAVGNRILE NGEVKPLDVK
VGDIVIFNDG YGVKSEKIDN EEVLIMSESD ILAIVEA

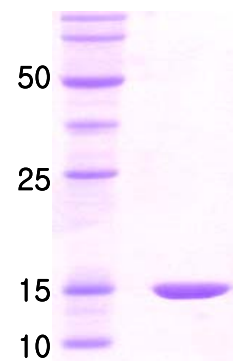
Purity : ≥ 95% by SDS-PAGE

Storage : Store -20°C. Avoid freeze/thaw cycles

References : Jue D. Wang , *et al* (1998) *Proc. Natl. Acad. Sci. USA* 95, 12163-12168

Landry,S.J., *et al*(1993) *Nature* 364 , 255-258

Xu, Z., *et al*(1997) *Nature* 388,741-750



14% SDS-PAGE