
GroEL(1-548aa)***E.coli* , Recombinant, expressed in *E.coli*****Cat. No. GRL3001****Size ; 100 µg**

Description ; GroEL protein is the major heat shock protein of *E.coli* and belongs to the chaperonin(HSP60) family. GroEL protein prevents misfolding of proteins and promotes the refolding and proper assembly of unfolded polypeptides generated under stress condition. GroEL gene was amplified by PCR from *E.coli* and cloned into an expression vector. This protein was overexpressed in *E.coli* and was purified by using conventional chromatography techniques.

Form : Liquid. In 25 mM Tris-HCl (pH7.5) 100mM NaCl, 5mM DTT,10% Glycerol

Molecular weight : 57.3KDa (548amino acids)

Purity : ≥ 95% by SDS-PAGE

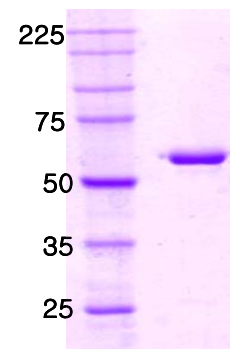
Storage : Store -20°C. Avoid freeze/thaw cycles

References : Hemmingsen,S.M., *et al* (1988) *Nature* . 333(6171) 330-334

Braig,K., *et al*(1994) *Nature* 371(6498) 578-586

Chen,L and Singler,P.B. (1999) *Cell* 99(7) 757-768

Welch,R.A., *et.al* (2002) *Proc.Natl.Acd. Sci. U.S.A.*99(26)17020-17024



12% SDS-PAGE